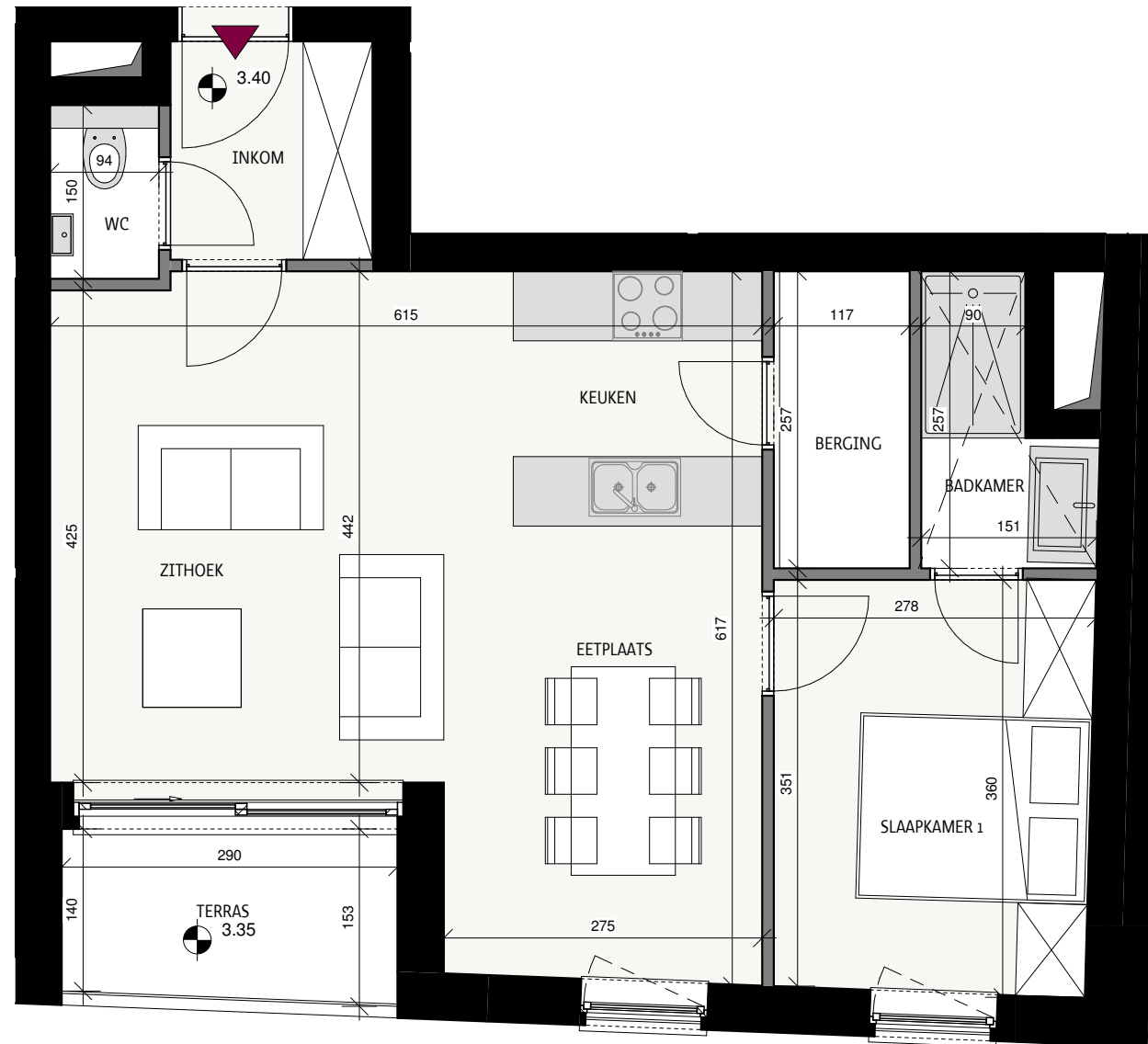


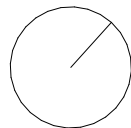
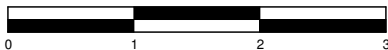
Zephyr

Oostende



Datum:
Handtekening:

Grondplan



Appartement 01.06

Hofstraat 9, 8400 Oostende

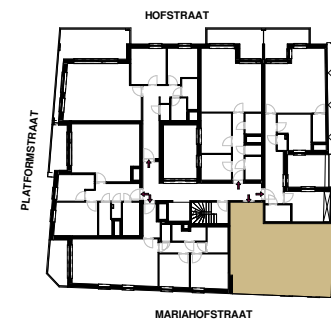
Bruto oppervlakte 63,57 m²
Terras + patio 4,57 m²
Slaapkamers 1
Verdieping 1



Mariahofstraat



Situeringplan



Projectontwikkelaar

STEENOVEN
SOLID PROJECT PLANNERS

BV TUMBLEWEED
Kwadestraat 149A bus 3.1
8800 Roeselare

Architect

BUREAU W
architects