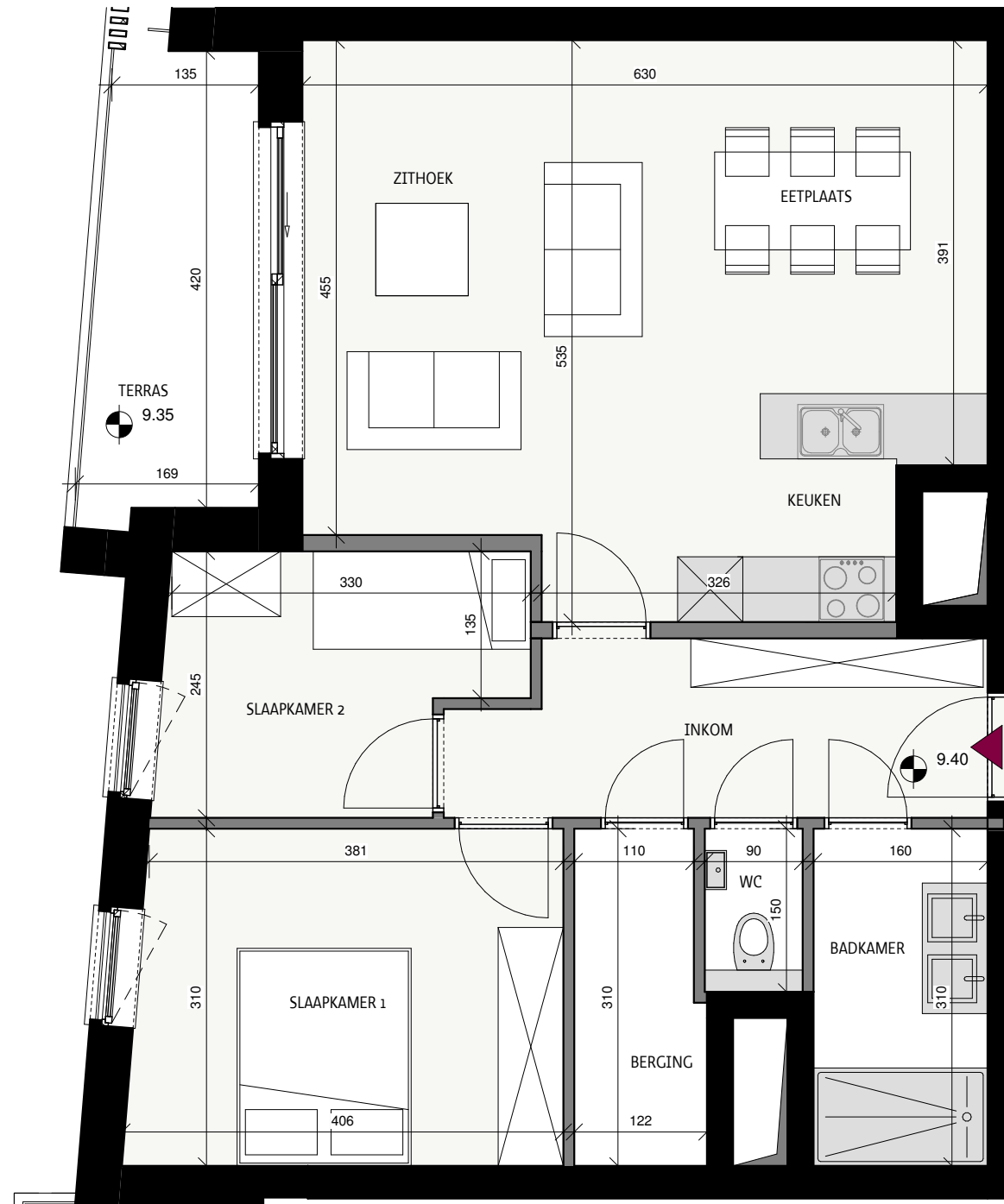


Zephyr

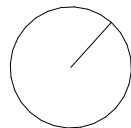
Oostende



Datum:

Handtekening:

Grondplan



Appartement 03.04

Hofstraat 9, 8400 Oostende

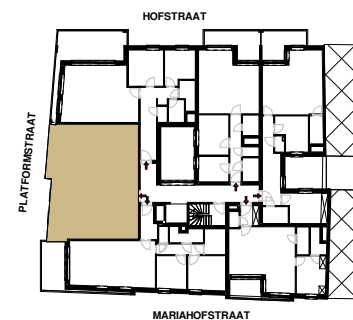
Bruto oppervlakte 82,21 m²
 Terras + patio 7,23 m²
 Slaapkamers 2
 Verdieping verdieping 3



Platformstraat



Situeringplan



Projectontwikkelaar

STEENOVEN
 SOLID PROJECT PLANNERS

BV TUMBLEWEED
 Kwadestraat 149A bus 3.1
 8800 Roeselare

Architect

BUREAU W
 architects