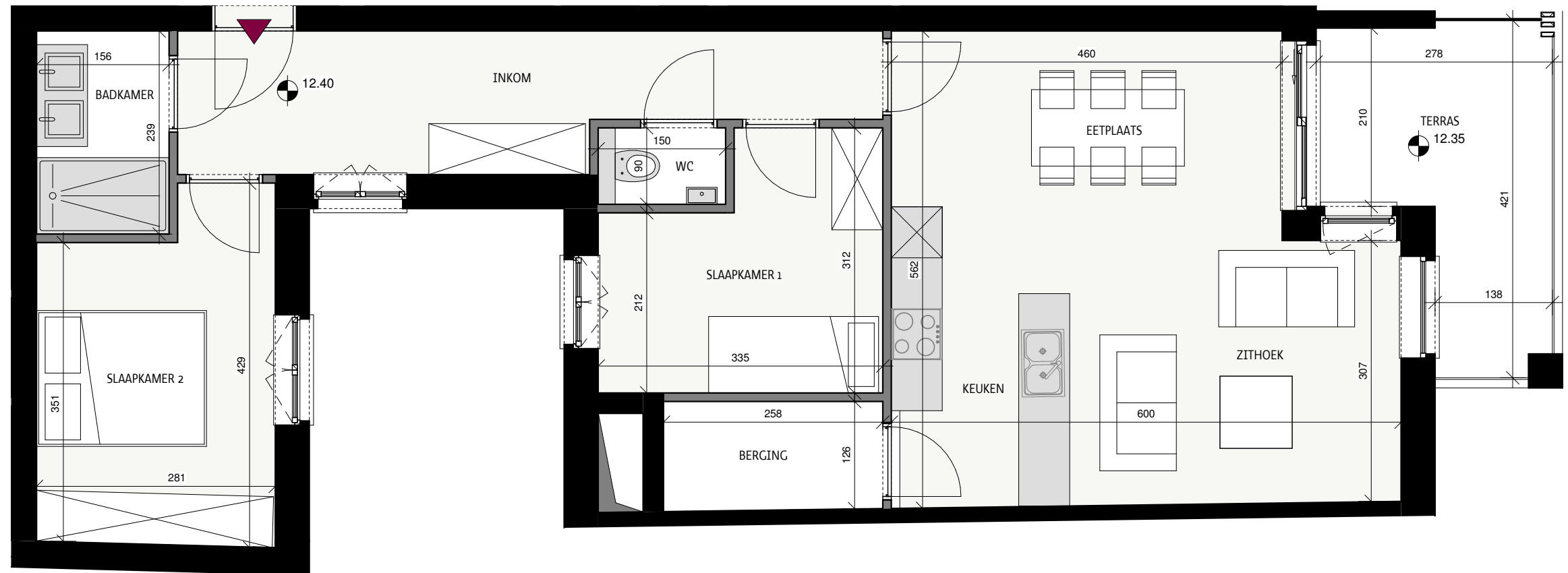


# Zephyr

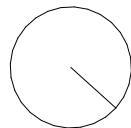
Oostende



Datum:

Handtekening:

## Grondplan



### Appartement 04.01

Hofstraat 9, 8400 Oostende

Bruto oppervlakte  
Terras + patio  
Slaapkamers  
Verdieping

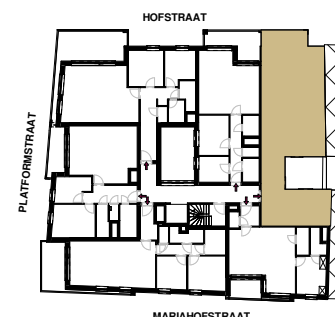
85,07 m<sup>2</sup>  
9,58 m<sup>2</sup>  
2  
verdieping 4



Hofstraat



Situeringplan



Projectontwikkelaar

**STEENOVEN**  
SOLID PROJECT PLANNERS

BV TUMBLEWEED  
Kwadestraat 149A bus 3.1  
8800 Roeselare

Architect

**BUREAU W**  
architects