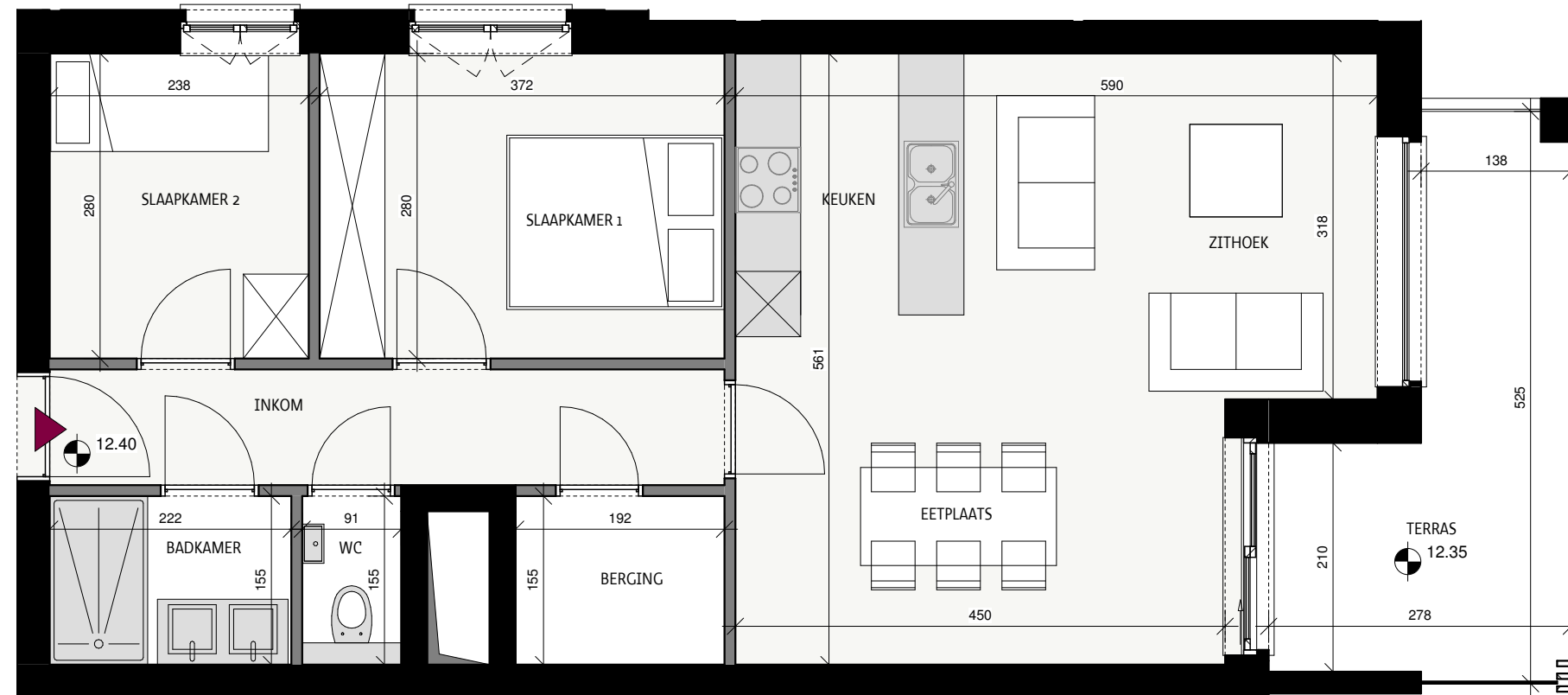


Zephyr

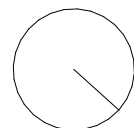
Oostende



Datum:

Handtekening:

Grondplan



Appartement 04.02

Hofstraat 9, 8400 Oostende

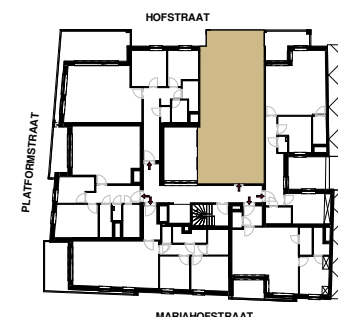
Bruto oppervlakte	73,61 m ²
Terras + patio	11,13 m ²
Slaapkamers	2
Verdieping	verdieping 4



Hofstraat



Situeringplan



Projectontwikkelaar

STEENOVEN
SOLID PROJECT PLANNERS

BV TUMBLEWEED
Kwadestraat 149A bus 3.1
8800 Roeselare

Architect

BUREAU W
architects