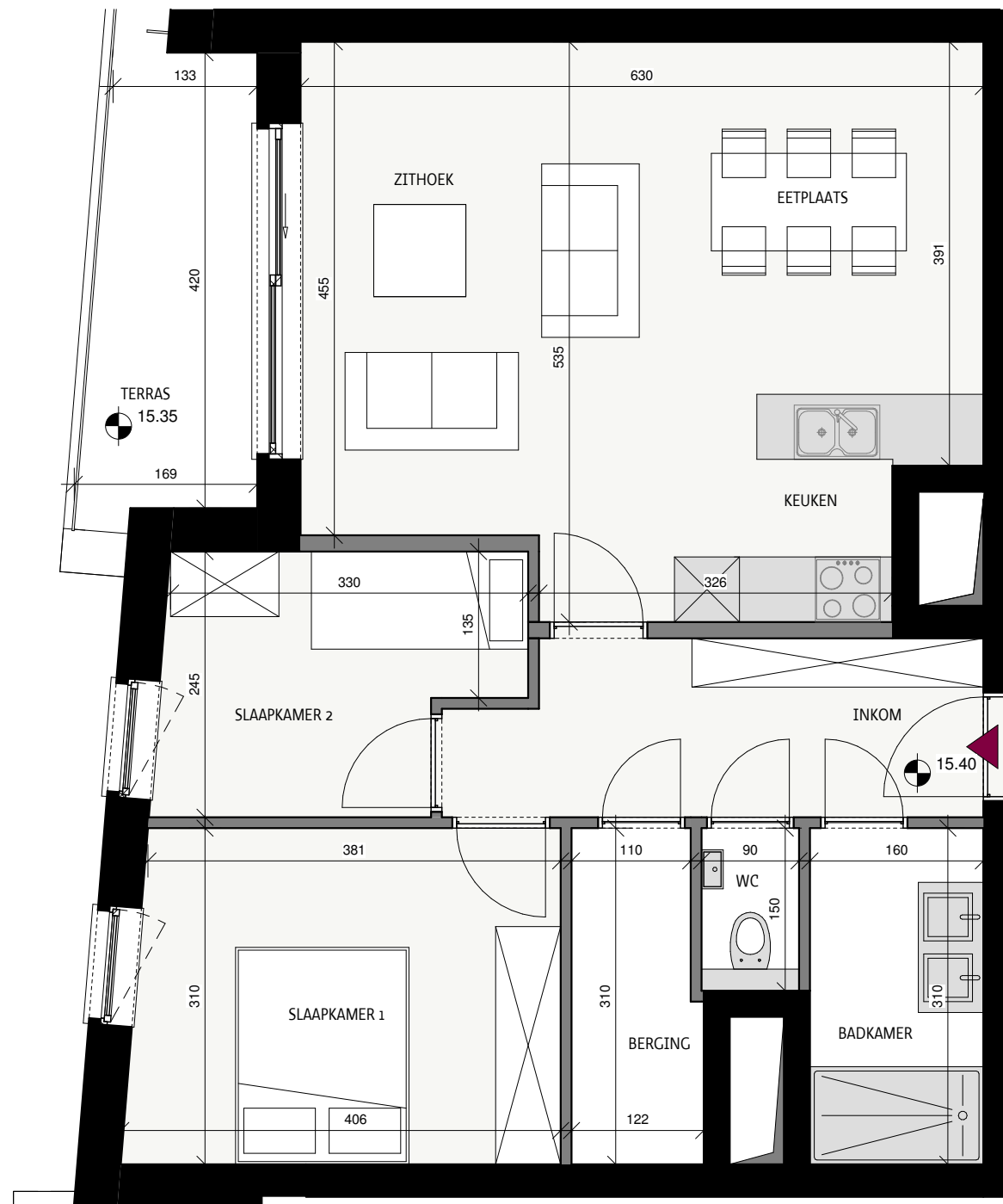
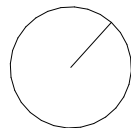


Zephyr

Oostende

Datum:
Handtekening:

Grondplan



Appartement 05.04

Hofstraat 9, 8400 Oostende

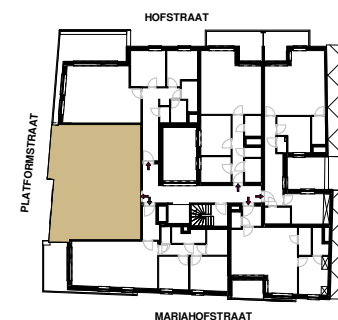
Bruto oppervlakte 82,21 m²
Terras + patio 7,23 m²
Slaapkamers 2
Verdieping verdieping 5



Platformstraat



Situeringplan



Projectontwikkelaar

STEENOVEN
SOLID PROJECT PLANNERS

BV TUMBLEWEED
Kwadestraat 149A bus 3.1
8800 Roeselare

Architect

BUREAU W
architects