

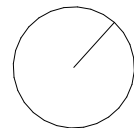
# Zephyr

Oostende



Datum:  
Handtekening:

## Grondplan



### Appartement 06.03

Hofstraat 9, 8400 Oostende

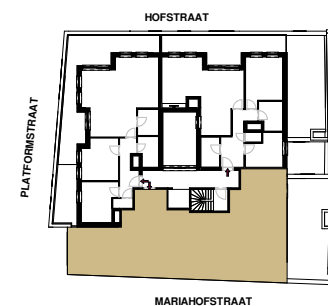
Bruto oppervlakte 96,34 m<sup>2</sup>  
Terras + patio 48,56 m<sup>2</sup>  
Slaapkamers 2  
Verdieping verdieping 6



### Mariahofstraat



### Situeringplan



### Projectontwikkelaar

**STEENOVEN**  
SOLID PROJECT PLANNERS

BV TUMBLEWEED  
Kwadestraat 149A bus 3.1  
8800 Roeselare

### Architect

**BUREAU W**  
architects